



Underworld – Hell – Corridor Construction Set by 3-D-C



Usage Guideline

Dear Customer,

we would like to thank you very much for your purchase of the Underworld Hell Corridor Construction Set by 3-D-C. Whilst we are trying to produce top level products, it is never completely avoidable, that errors may occur. We are always very open for your issues, please email them to the Email Address noted in the read me file. The file you purchased is part of the Underworld Series, but also runs on its own. To check out more products of this style, please check our website www.3-d-c.de for more information

General

The Underworld Hell Corridor Construction Set is modular build construction set to build corridor lanes and rooms of a horror-hell style. It comes with various parts of a corridor, props, lights and basic poses. It is a standalone item. .

Please read this guidance first, before you submit support queries!

System Requirements: This product has been produced, tested and all samples had been rendered on a Poser Pro setup, Windows XP 4GB Ram Quad Processor Machine. With all props loaded, a render with Firefly shall need approx 1000 MB of RAM. Textures are designed to be of high quality level to allow close up of figures, props and walls. The product works best with Poser 8/2010 and indirect light. It works on lower versions of Poser as well but doesn't produce the same output due to missing indirect lighting.

DAZ Users: We are doing only limited testing for DAZ. During our tests we found all things running ok and rendering ok with DAZ 2.3 and 3.0. However, DAZ is not fully supported. Some lights and



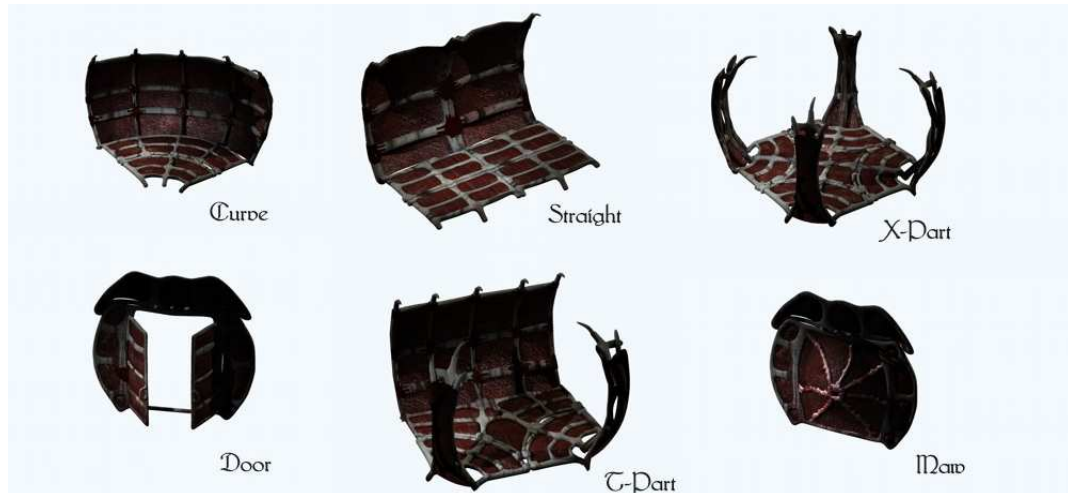
Known Limitations: Poser 6 and older versions and DAZ do not support the body masterdials used in the tentacle and the muscle. Also, the light output in Poser 7 and lower and D/S is different as those do not support indirect light. This package is working best in Poser 8 and up.

Installation

The product comes a ZIP file, which extract the files to your Poser or DAZ runtime. You will find all figures or poses under "3-D-C" subdirectories. Underneath that, there are subdirectories called "3-D-C Underworld" then "Corridor". All Props, Poses and Lights follow the same path model. You can (if you wish), move the character in to a new Folder. Leave the OBJ in the same folder as described in the CR2 file. (3dc:Geometries)

Loading the ROOM

The assembly of a corridor lane or a room can be done by combining any of those base pieces:



All items are boned. You can disable the ceiling or any other part to make long focal lense shots. The Door part and the Maw does fit to any open part of the straight part, Xpart or TPart. To assemble a larger room, combine multiple XParts together.

If you want to use the Alternate floor for the Xpart, disable the floor on the figure, then load the prop out of your prop section of your runtime.

The easiest way to keep your corridor in place when you start assembling a scene, is, to load the figures you need and group them together. You can do this by using the Hierarchy editor from Poser. Please check my tutorial on my website how to use that tool. [Grouping manual](#)

The Muscle and Tentacle has a master body dial injected. Select the BODY of this figure then use the masterdial to move the figure. This does not work in P6 or D/S.

Note: The Poser Ground usually overlays the floor. Disable the GROUND Prop before you continue using the floor figure.

The Materials



No separate materials delivered with this set.

The Lights

In order to load the lights, load an Ambience setting first. There low and higher ambience lights. Select the light, then use the “stackload” button to load it into addition of the ambience light. You can do so for more lights.



Props

This set comes with various props in addition. The Maw has injected Morphs to widen, tighten and move the outer mouth.

The smartprops that come with this set can be found under “Various” in your props section. Ensure you have M4 or V4 selected before you load the smartprop.

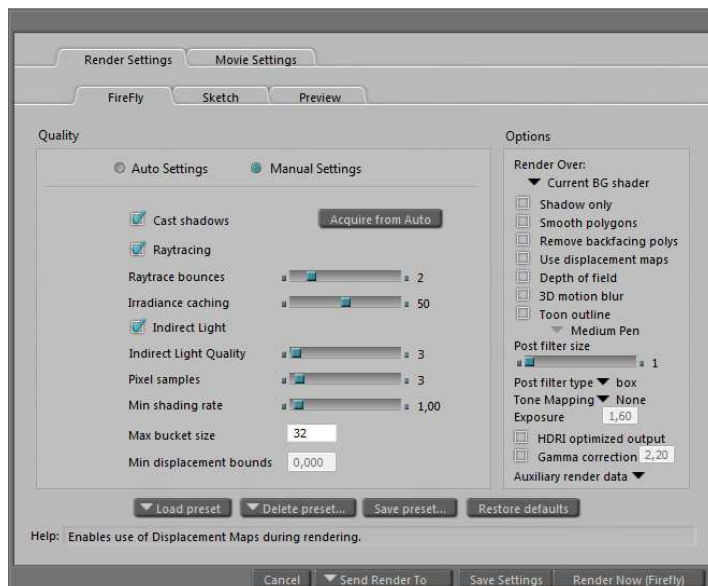
Poses

The poses that come with this set shall be understood as starter poses. As you can see from my websites freebie section I am constantly creating free poses. There will be coming some Underworld free poses as well in the future.

The poses within this set are designed for the parts in this set, such as the Maw, the door or the muscle.

Render Settings

This set is low poly, still low shading rates are usually not necessary. The below shall fill the needs.



please note: All materials are already setup with ambience occlusion. You don't need to set this through any lights.

Cameras



There are no cams included as they would have been senseless for the corridor.

Support

3-D-C will support bought packages. Any stolen or un-allowed copied software is out of support. We retain the right to ask for a receipt of your purchase to proof the support inquiry.

DAZ Studio is not supported. However, the package shall work in DAZ, with the above mentioned limitations.

If you encounter any technical difficulties with this product, please email info@3-d-c.de for help.

We usually answer all questions within 24 hrs during day time CET.

Technical patches will be rolled out if the problems proof to be true. We don't apply to a patch cycle, however, do usually patch asap if necessary.

A final word about piracy ...

Piracy and unauthorized sharing of this product is not only against license and law, it damages the productivity of the creators and therefore may cause the artists to stop creating content. With illegal sharing you destroy a community of creative people, so please, don't share or breach license within your own interest. Artists working on content like this are usually individuals, no big companies.

Copyright holder of this Product is
3-D-C, Oliver Schramm
Am Spitzenpfad 46
63303 Dreieich, germany