



## Industrial Punk Rock Set by 3-D-C



### Usage Guideline

Dear Customer,

we would like to thank you very much for your purchase of the Industrial Punk Rock Set by 3-D-C. Whilst we are trying to produce top level products, it is never completely avoidable, that errors may occur. We are always very open for your issues, please email them to the Email Address noted in the read me file. Whilst this item is meant to be working most perfect with the Industrial Room, also issued by 3-D-C (Find it [here](#)), you can also use this product standalone. To check out more products of this style, please check our website [www.3-d-c.de](http://www.3-d-c.de) for more information

### **General**

The Industrial Punk Rock Set is a Set of Music Equipment for a SciFi or Industrial Scene, Instruments, Stage Poses, Expressions, Lights etc. It contains The Guitar, Microphone, Keybaord and Drumkit, Poses for each, Expressions fo M4 and V4, a light set and Spot lights, and various Materials.

***Please read this guidance first, before you submit support queries!***

System Requirements: This product has been produced, tested and all samples had been rendered on a Poser Pro setup, Windows XP 4GB Ram Quad Processor Machine. With all props loaded, a render with Firefly shall need apprx 800Meg of RAM. Textures are designed to be of high quality level.

DAZ Users: We are doing only limited testing for DAZ. During our tests we found all things running ok and rendering ok with DAZ 2.3 and 3.0. However, DAZ is not fully supported. Some Poses and Setups do appear different in D/S.

### **Installation**



The product comes a ZIP file, which extract the files to your Poser or DAZ runtime. You will find all figures or poses under “!3-D-C” subdirectories. Underneath that, there are subdirectories called “!3-D-C Industrial Punk Rock”. All Props, Cams, Poses and Lights follow the same path model. You can (if you wish), move the character in to a new Folder. Leave the OBJ in the same folder as described in the CR2 file. (3dc:Geometries)

## **Loading the Instruments**

### Drumkit:

The Drumkit is a Figure, located under your Figures Section of your runtime.

### Guitar and Microphone

Are Smartropped Items located under the props section. Load the Guitar or Microphone for M4 and V4 you need, select the M4 or V4 figure first. Then apply a pose.

### Keyboard and other items

Non Smartropped items are located under the props section as well. Just place them where needed.

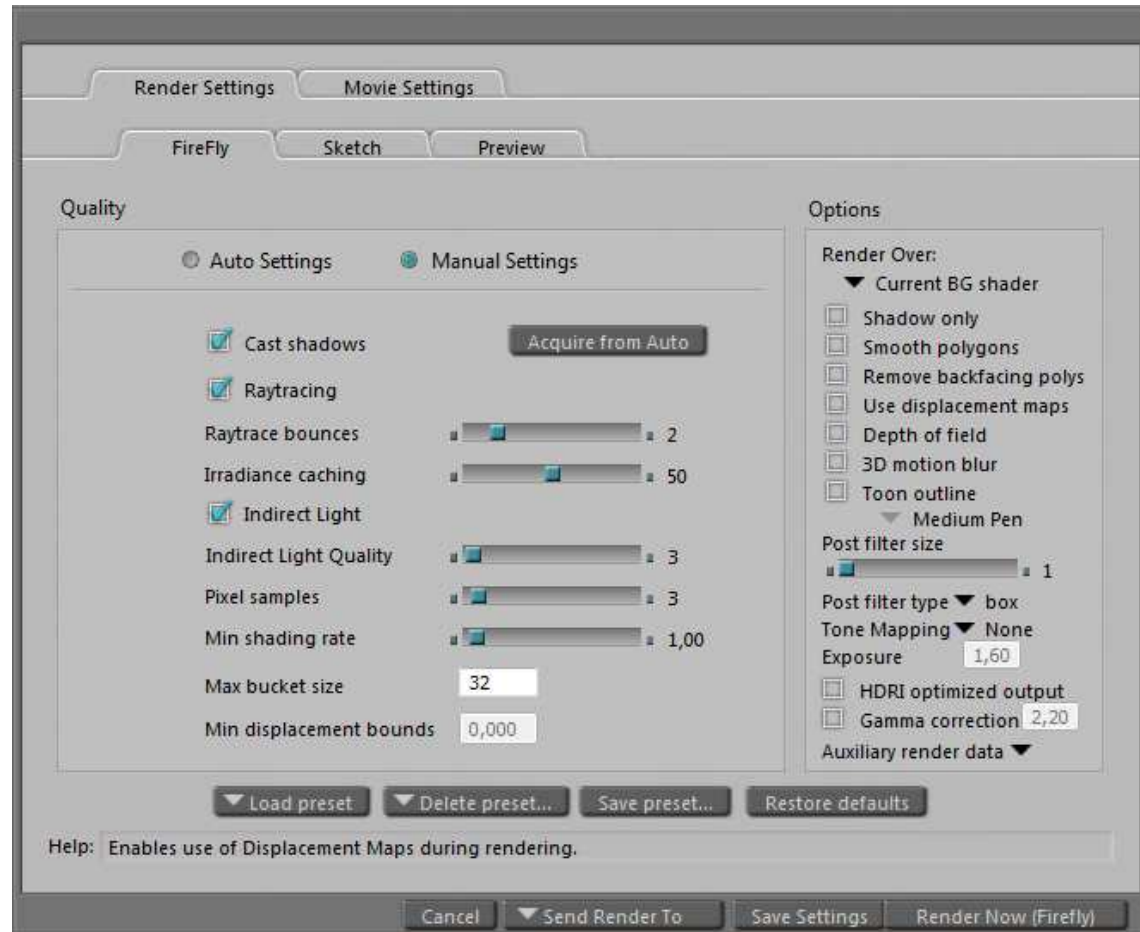
### Spotlights

The Spotlights are boned figures. You can load the out of your figure section. They are designed to load to the Industrial Rooms Ceiling. You can move the front and the upper mount.



## Render Settings

The Industrial Room is low poly however low shading rates are usually not necessary. The below shall fill the needs.



## The Materials

The material Sets for the Drumkit and Guitar can be loaded from the Pose Section (Subdirectory as explained above, then \Instruments), make sure you select the Instrument first.

The Guitar is a prop and pose mats only apply if it is attached to a figure. If you use the guitar standalone, use the materials located under the materials section of your runtime.

In order to apply the atmosphere, go to your material room, select the atmosphere then load the material out of your material section of your runtime.

## The Lights

The Lights load smartropped to the spot lights. Please select the spotlights first, then load the lights. If you already have other lights loaded to your scene, use this button in Poser to avoid overwrite.



This product works best with indirect lighting (Poser 8 and Pro 2010).



## Props

Just load the other props to the product as usual.

## Poses

Poses provided for M4 and V4 belong to the instruments. Load the associated pose as usual.

Note: the Guitar has some morph injects to adjust the belt if you need.

If you encounter issues with placing your character to the Drumkit, I recommend placing the drumkit first, then noting all the X/Y/Z and rota settings you used on its body and issue the same settings to M4 or V4.

## Cameras

No Cameras provided in this set.

## Support

3-D-C will support bought packages. Any stolen or un-allowed copied software is out of support. We retain the right to ask for a receipt of your purchase to proof the support inquiry.

DAZ Studio is not supported. However, the package shall work in DAZ.

If you encounter any technical difficulties with this product, please email [info@3-d-c.de](mailto:info@3-d-c.de) for help.

We usually answer all questions within 24 hrs during day time CET.

Technical patches will be rolled out if the problems proof to be true. We don't apply to a patch cycle, however, do usually patch asap if necessary.

## **A final word about piracy ...**

Piracy and unauthorized sharing of this product is not only against license and law, it damages the productivity of the creators and therefore may cause the artists to stop creating content. With illegal sharing you destroy a community of creative people, so please, don't share or breach license within your own interest. Artists working on content like this are usually individuals, no big companies.

Copyright holder of this Product is  
3-D-C, Oliver Schramm  
Am Spitzenpfad 46  
63303 Dreieich, germany