



GENETIC LABORATORY 2260 by 3-D-C



Usage Guideline

Dear Customer,

we would like to thank you very much for your purchase of the Genetic Laboratory 2260 by 3-D-C. Whilst we are trying to produce top level products, it is never completely avoidable, that errors may occur. We are always very open for your issues, please email them to the Email Address noted in the read me file.

General

The Genetic Laboratory 2260 is modular build room environment of a laboratory used for genetic experiments. It is a set of an eightsided room (split into two halves) with boned walls and doors, a moveable floordoor and a large chamber in its center. It comes with modular light sets and 20 poses for M4 and V4.

Please read this guidance first, before you submit support queries!

System Requirements: This product has been produced, tested and all samples had been rendered on a Poser Pro setup, Windows XP 4GB Ram Quad Processor Machine. With all props loaded, a render with Firefly shall need apprx 1 GB of RAM. Textures are designed to be of high quality level to allow close up of props and walls.

DAZ Users: We are doing only limited testing for DAZ. During our tests we found all things running ok and rendering ok with DAZ 2.3 and 3.0. However, DAZ is not fully supported

Installation

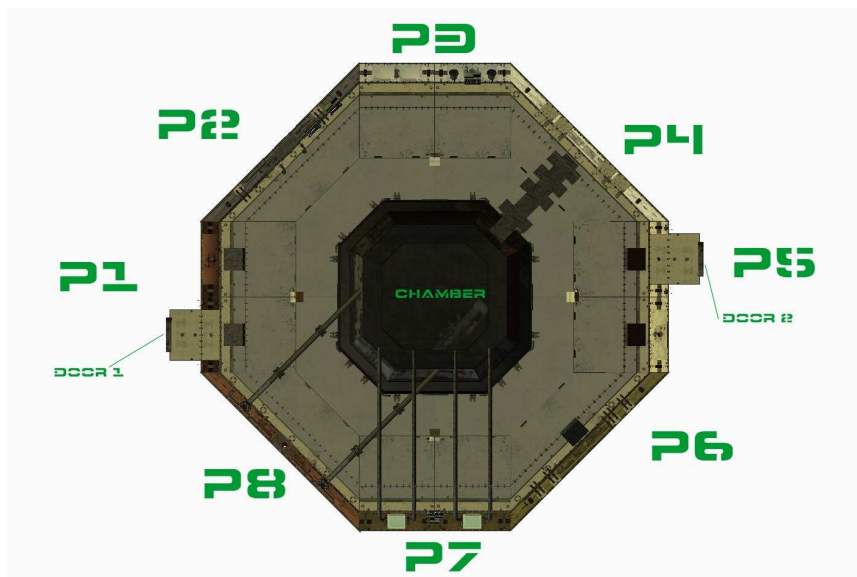


The product comes a ZIP file, which extract the files to your Poser or DAZ runtime. You will find all figures or poses under “!3-D-C” subdirectories. Underneath that, there are subdirectories called “!3-Gentech Laboratory 2260”. All Props, Cams, Poses and Lights follow the same path model. You can (if you wish), move the character in to a new Folder. Leave the OBJ in the same folder as described in the CR2 file. (3dc:Geometries)

Loading the ROOM

The room is an eight sided room set, divided into:

- Wall Parts P1 to P4 (P1 has the door which are two boned sets)
- Wall Parts P5 to P8 (P5 has the door which are two boned sets)
- Main Floor (Including the moveable Floor Door, and the upliftable platform)
- Main Ceiling
- Main Chamber, boned Parts P-1 to P-4 (Four sector Walls) and the door sides, a pose is included for open and closing this door



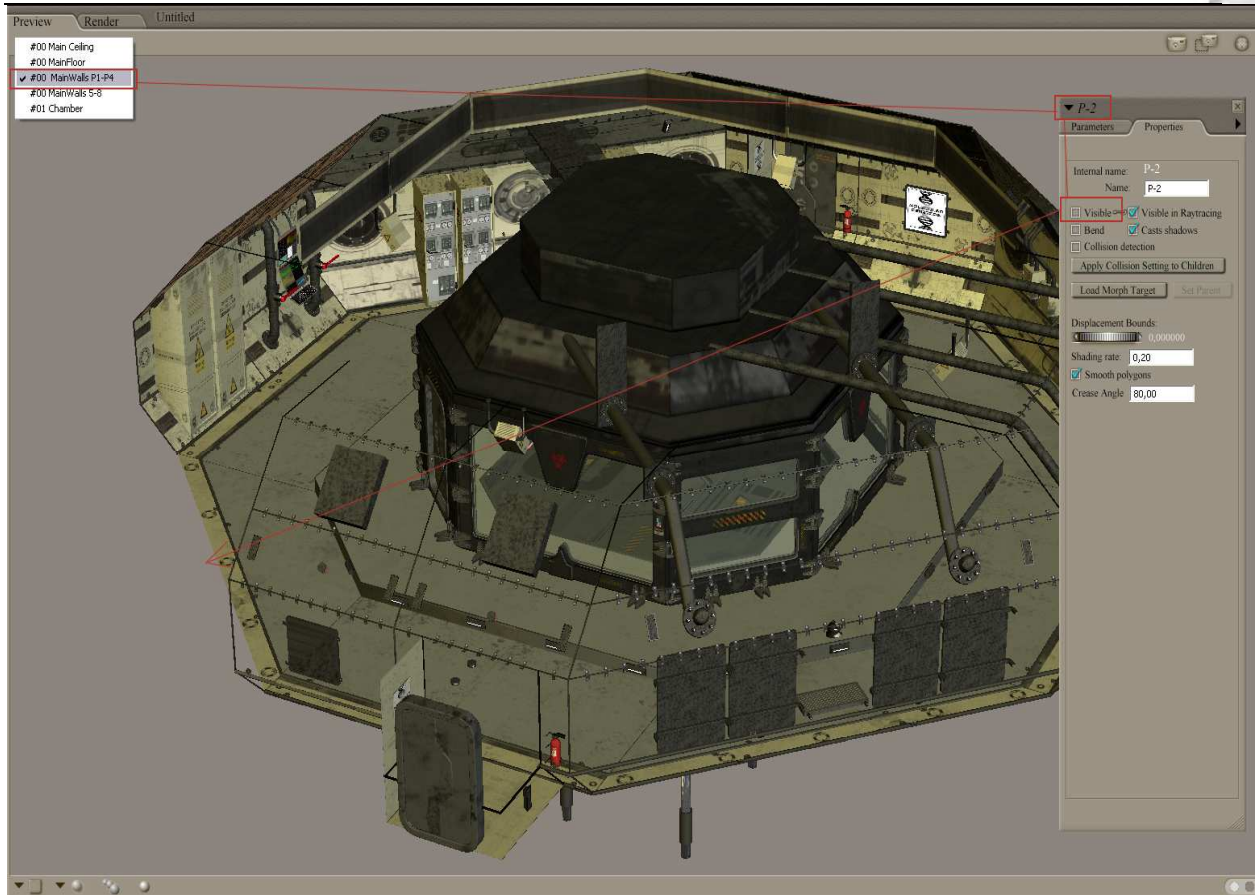
Load the parts you need. Always load the room parts before your figure characters as lights apply to the boned parts. That could mess up if you have a body character loaded first.

The bones parts are restricted in their moving. You can only move those parts, which are moveable (ie the doors).

In order to hide a wall, select it (ie. P2 from the first wall set) and go to the properties section of the object. Unselect the “Visible” tag.

3-D-C

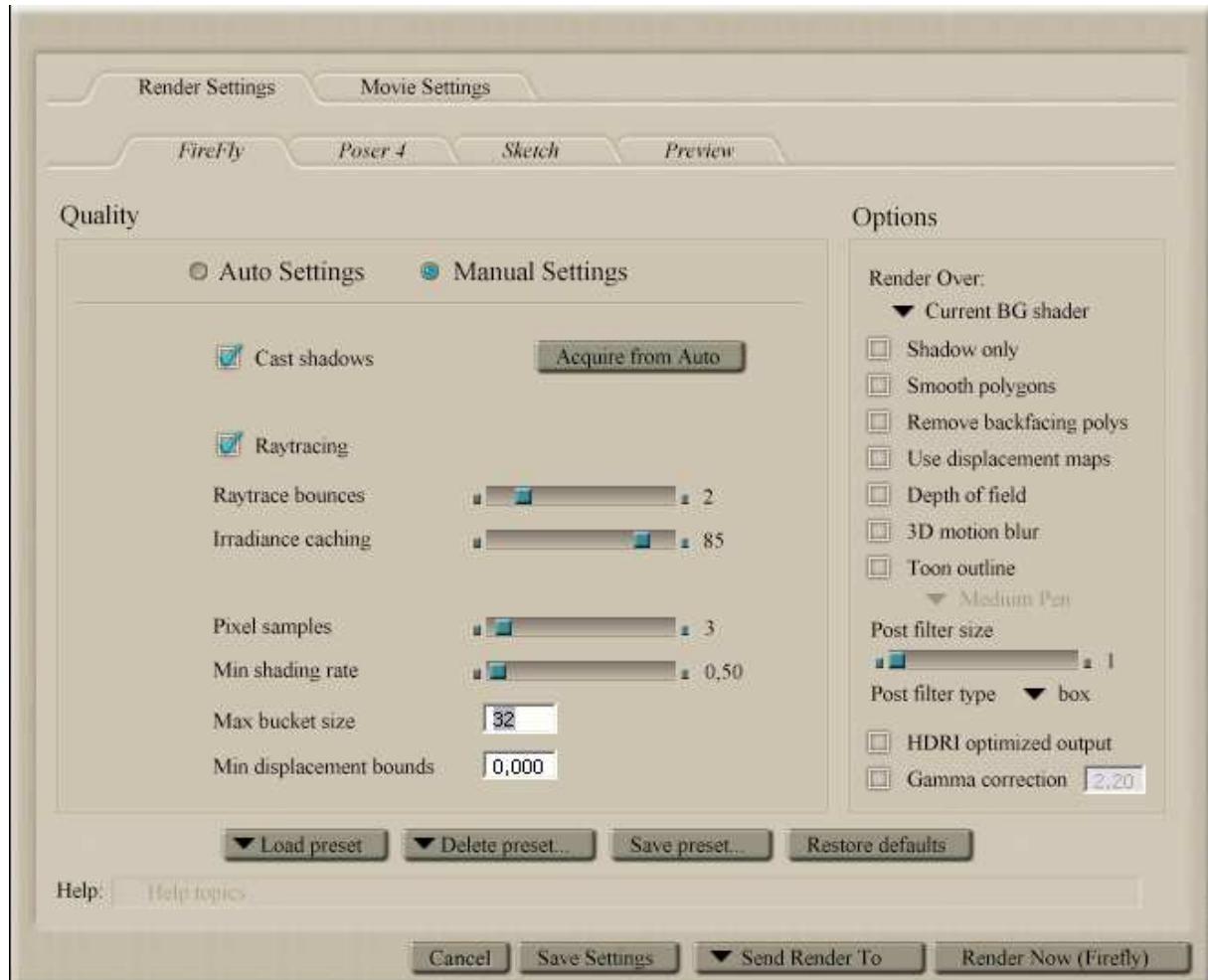
3D Resources
for the community





Render Settings

The Genetic Laboratory 2260 is a high poly



The Materials

This set comes with no specific Material sets. But they are planned. Check our website for more freebies associated to this set

The Lights

The light sets come as modular appliance as well. Load the lights you need in order. The first one just by a double click. If you want to use more than your first light we recommend to load the Ambient Lights first. To load another light set on top without deleting the previous use the stack loading tool. This will load the light set without deleting the prior one. Lights are located underneath the lights section of your runtime.





Props

Normal Props: Normal Props are located underneath the !3-D-C\Genetic Laboratory 2260 Directory. Simply load them by doubleclicking.

Smartprops: Smartprops load to characters. Select M4 or V4, then double click the smartprop ICON located under !3-D-C\Genetic Laboratory 2260 \Smartprops.

Poses

Poses usually load your character pose to the location it refers to. (Like stated in the name of the pose, ie. V4 Table P5 loads V4 to the table in part P5).

Room Poses: There is one room pose for opening and closing the doors of the chamber located under !3-D-C\Genetic Laboratory 2260.

Cameras

The cameras provided with this set are assigned to a DOLLY Cam. To create one, click on OBJECT, Create Camera, Dolly Cam. Then double click on the Camera.

They are located underneath !3-D-C\Genetic Laboratory 2260 in your runtime.

Support

3-D-C will support bought packages. Any stolen or un-allowed copied software is out of support. We retain the right to ask for a receipt of your purchase to proof the support inquiry.

DAZ Studio is not supported. However, the package shall work in DAZ.

If you encounter any technical difficulties with this product, please email info@3-d-c.de for help.

We usually answer all questions within 24 hrs during day time CET.

Technical patches will be rolled out if the problems prove to be true. We don't apply to a patch cycle, however, do usually patch asap if necessary.

A final word about piracy ...

Piracy and unauthorized sharing of this product is not only against license and law, it damages the productivity of the creators and therefore may cause the artists to stop creating content. With illegal sharing you destroy a community of creative people, so please, don't share or breach license within your own interest. Artists working on content like this are usually individuals, no big companies.

Copyright holder of this Product is

3-D-C, Oliver Schramm

Am Spitzenpfad 46

63303 Dreieich, germany